





Nestled alongside a charming stream, this beautifully upgraded detached home offers four to five bedrooms and a thoughtfully reimagined design for modern family living. With spacious open-plan interiors, an expansive kitchen, and an integrated utility room, the home balances style with exceptional functionality. Each bedroom is a comfortable double, making early viewing essential to appreciate the generous space.

- Four double bedrooms
- Spacious detached family home
- West-facing landscaped garden
- Ample parking on driveway
- Scenic stream-side location
- Flexible fifth bedroom/study
 - Bi-fold doors to garden
 - Master with en-suite
- Modern, open-plan layout
 - EPC rating: D (65)

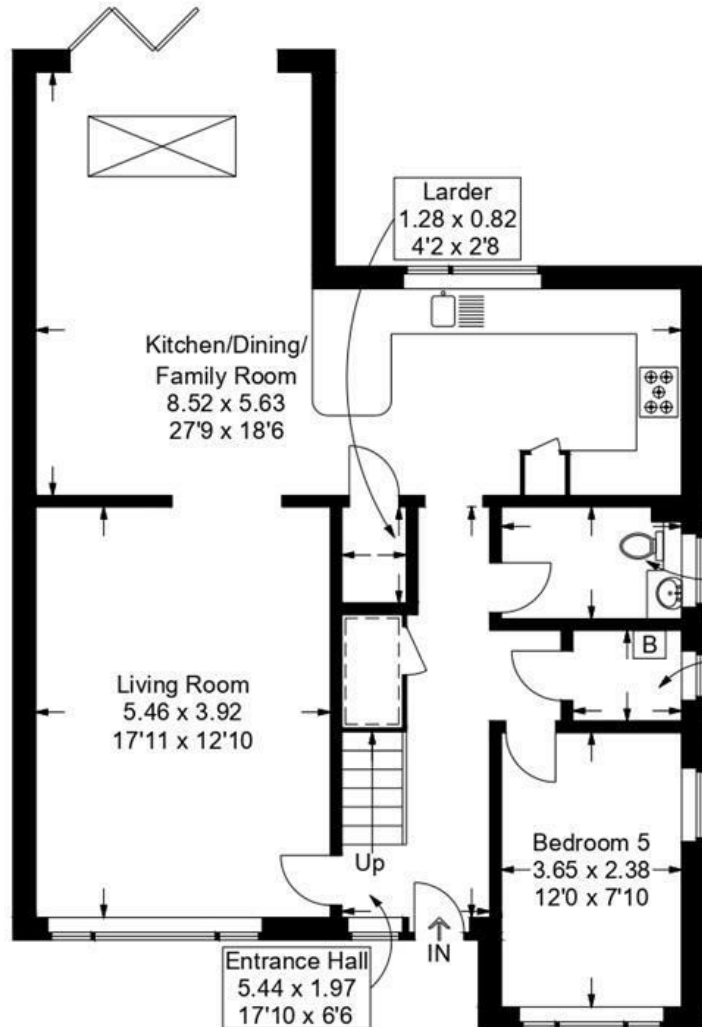


Brookmead Way, Langstone

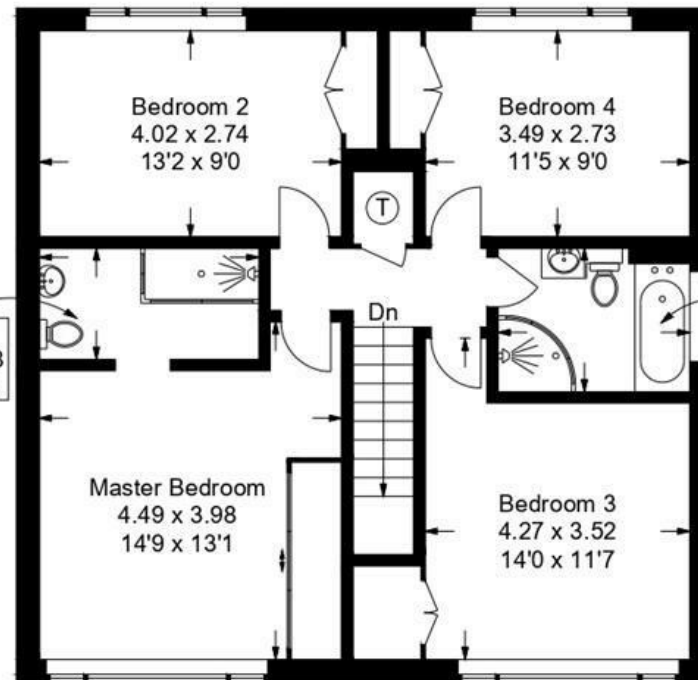
Approximate Gross Internal Area = 158.1 sq m / 1702 sq ft

Outbuilding = 32.3 sq m / 348 sq ft

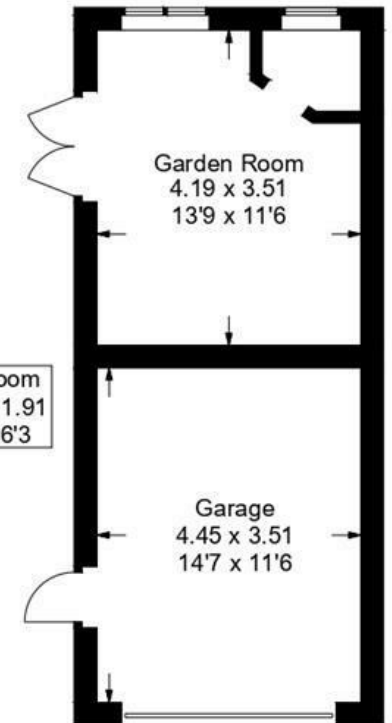
Total = 190.4 sq m / 2050 sq ft



Ground Floor



First Floor



Outbuilding

[] = Reduced headroom below 1.5m / 5'0

This plan is for layout guidance only. Not drawn to scale unless stated. Windows and door openings are approximate. Whilst every care is taken in the preparation of this plan, please check all dimensions, shapes and compass bearings before making any decisions reliant upon them.